

Sipuncula

Echiura

Pogonophora
(=Vestimentifera)

Sipuncula

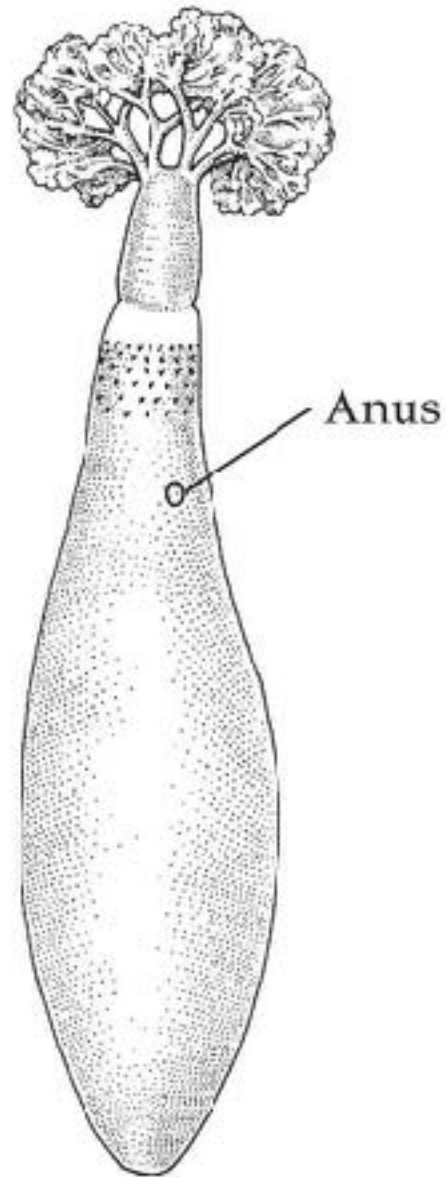








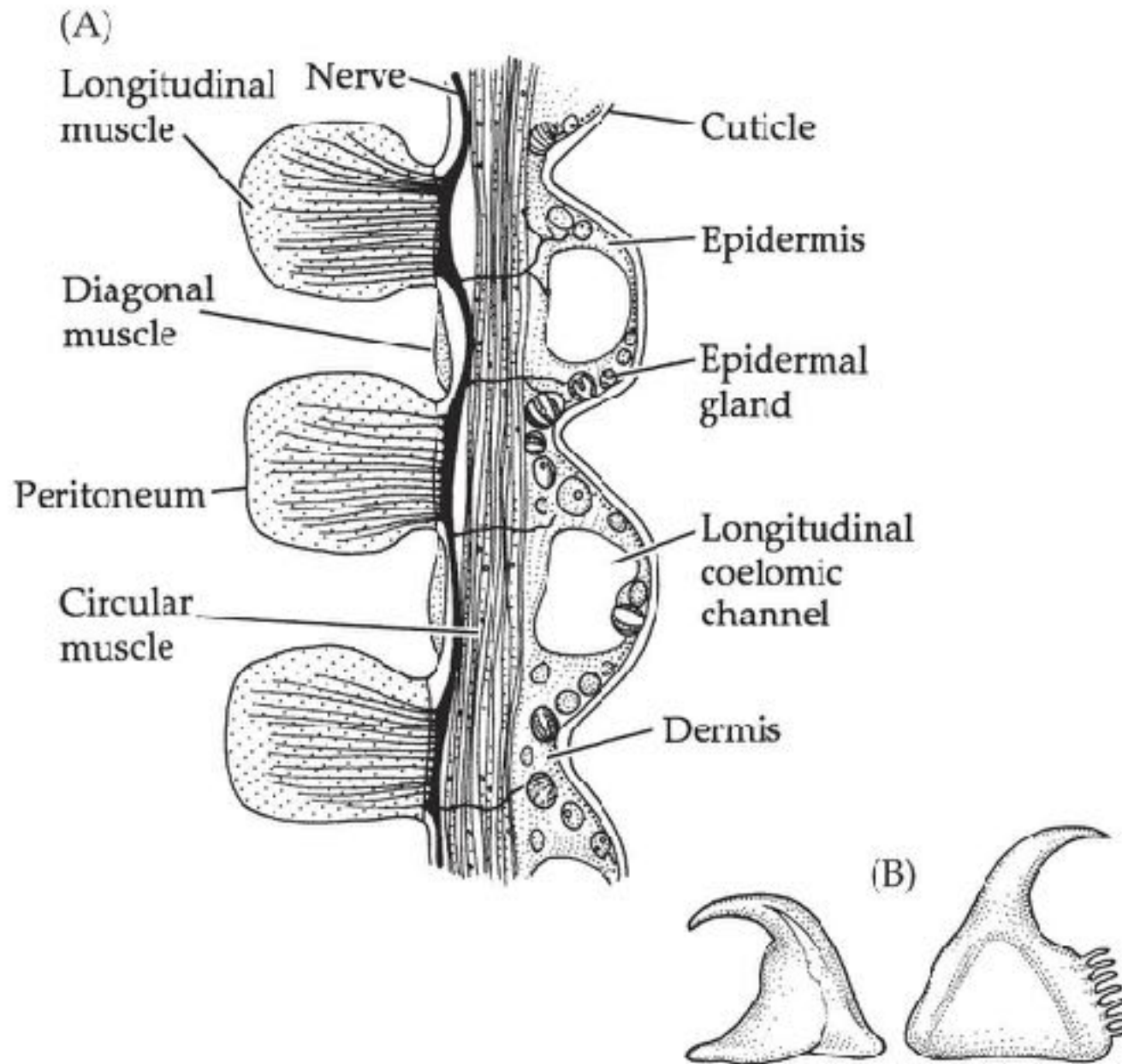
(C)



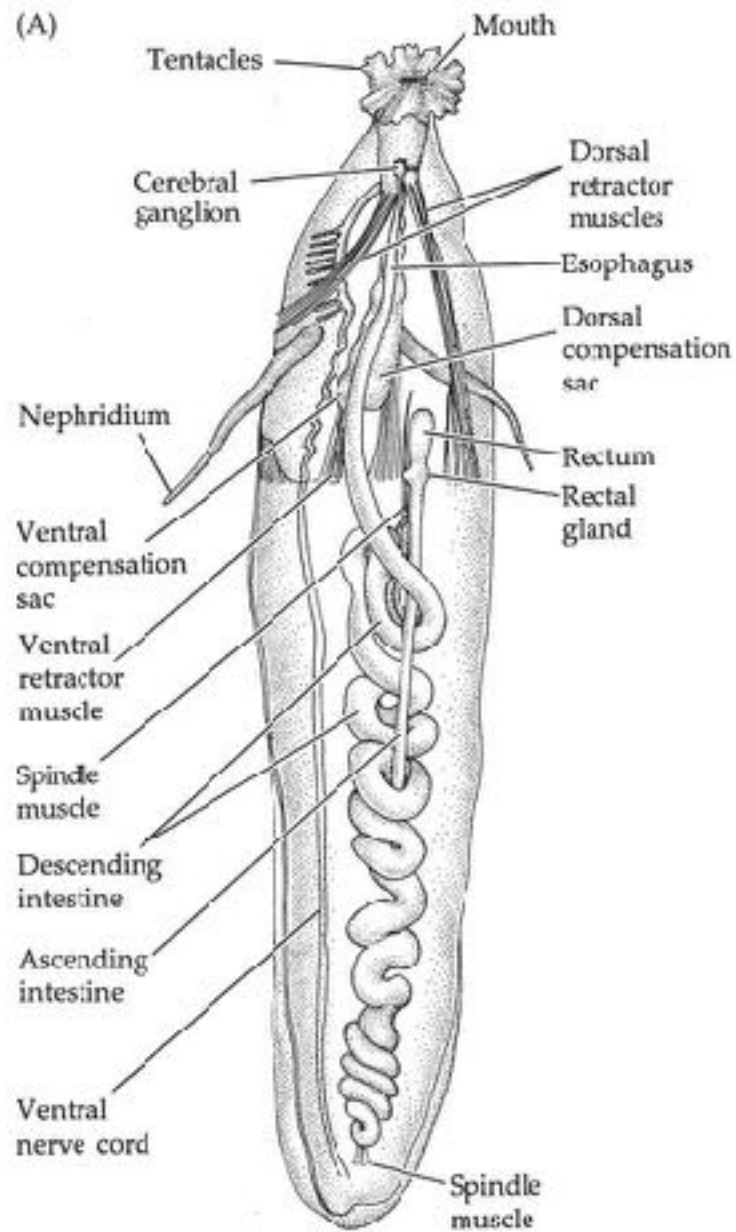
(D)



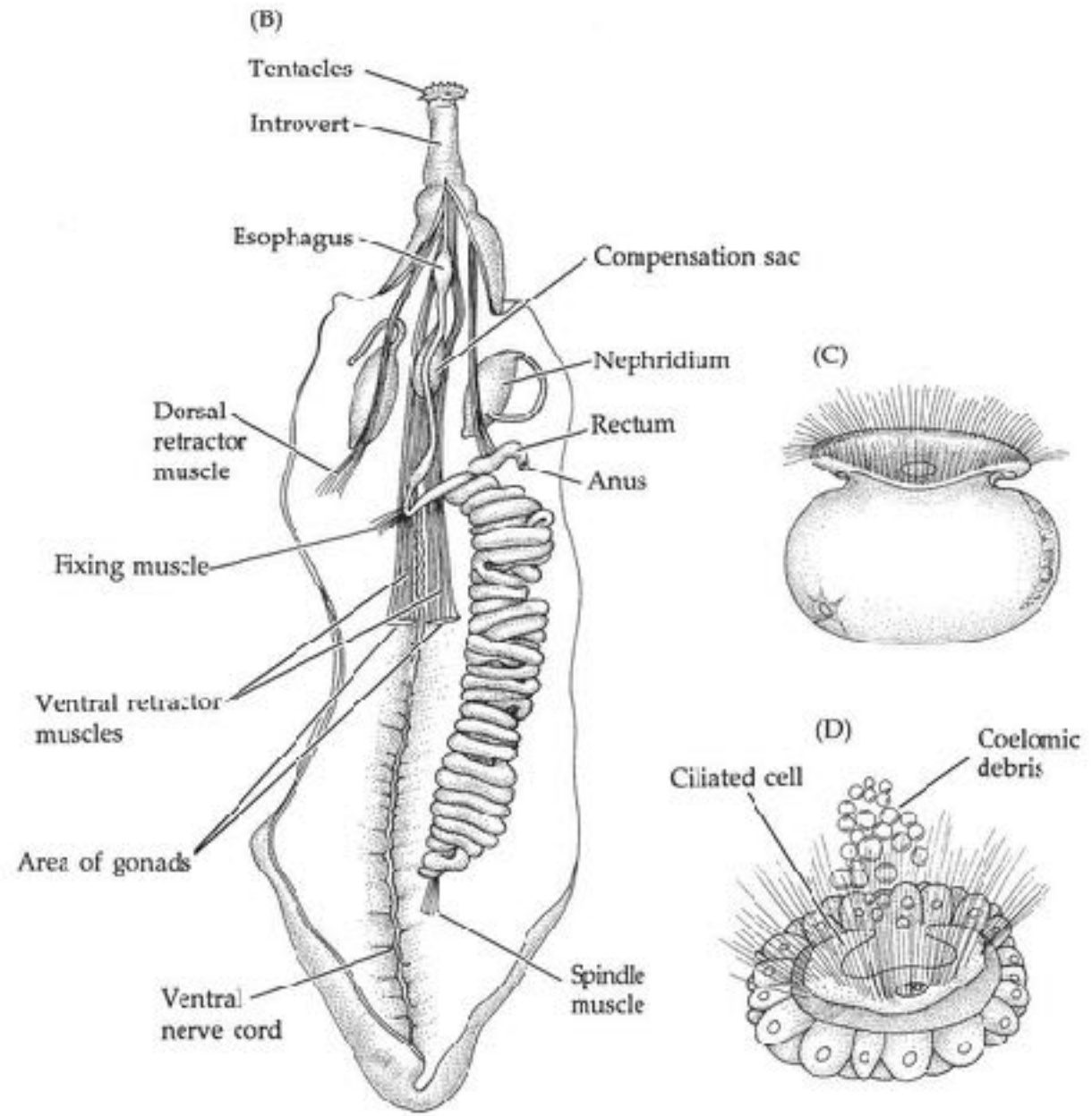
14.2 (A) The body wall of *Sipunculus nudus*; (B) Two types of cuticular spines from sipunculans



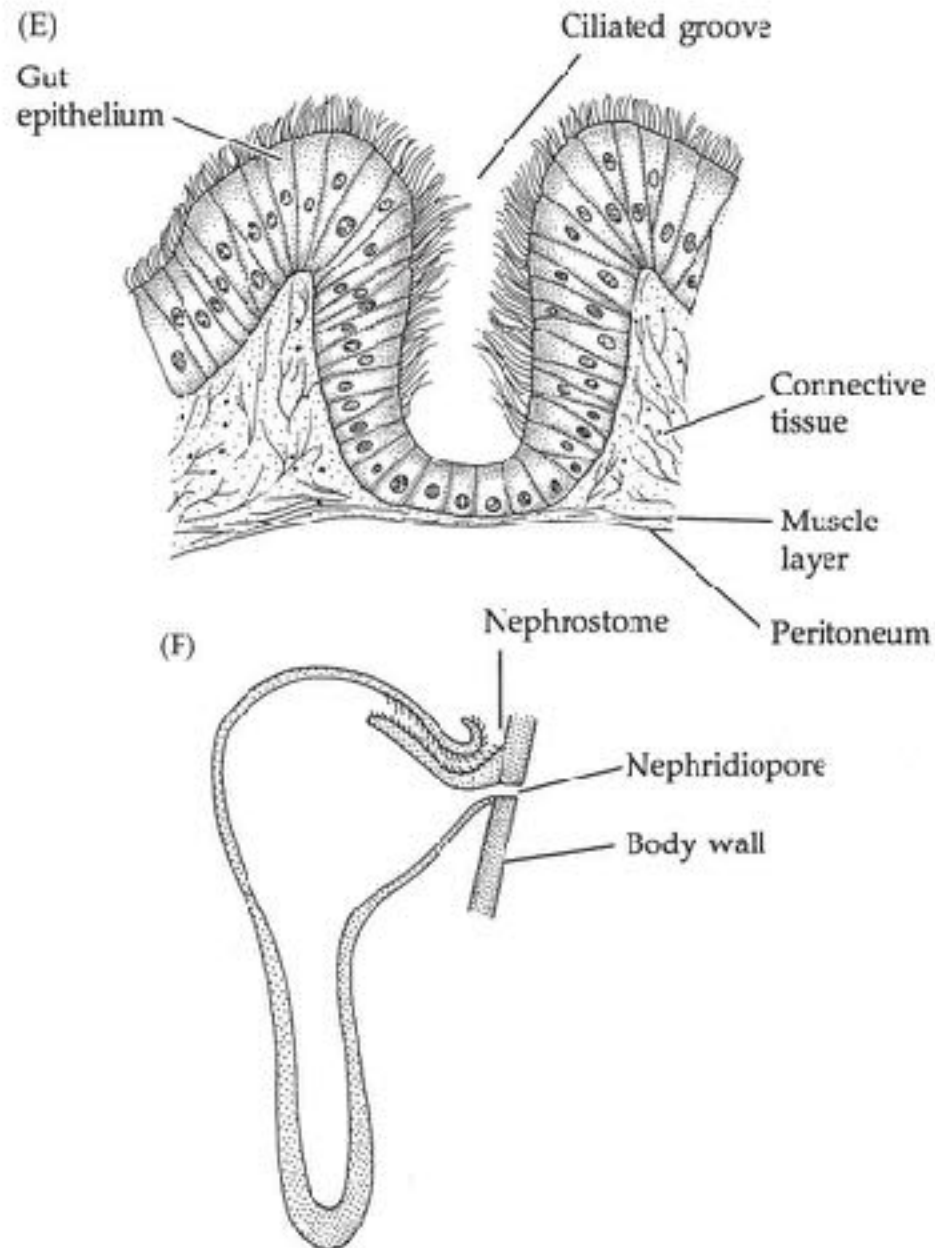
14.3 Sipunculan anatomy (Part 1)



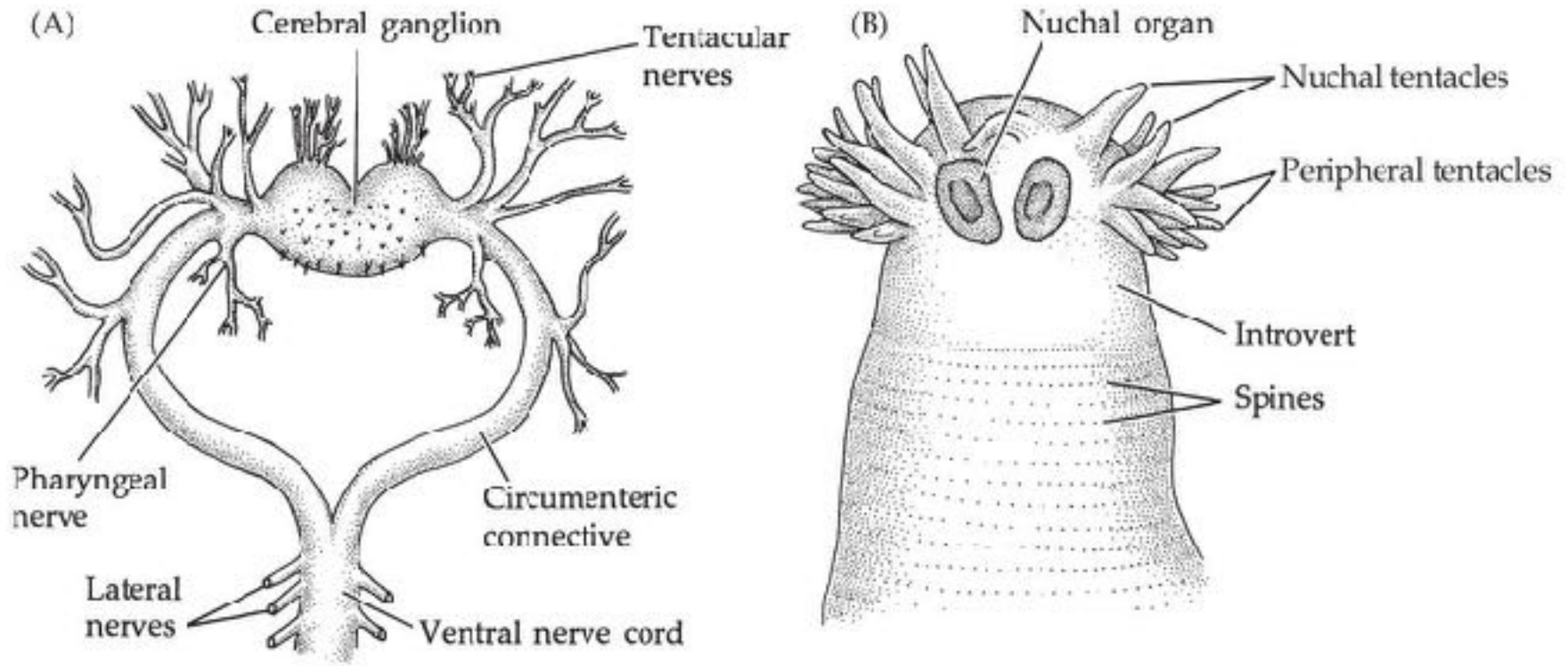
14.3 Sipunculan anatomy (Part 2)



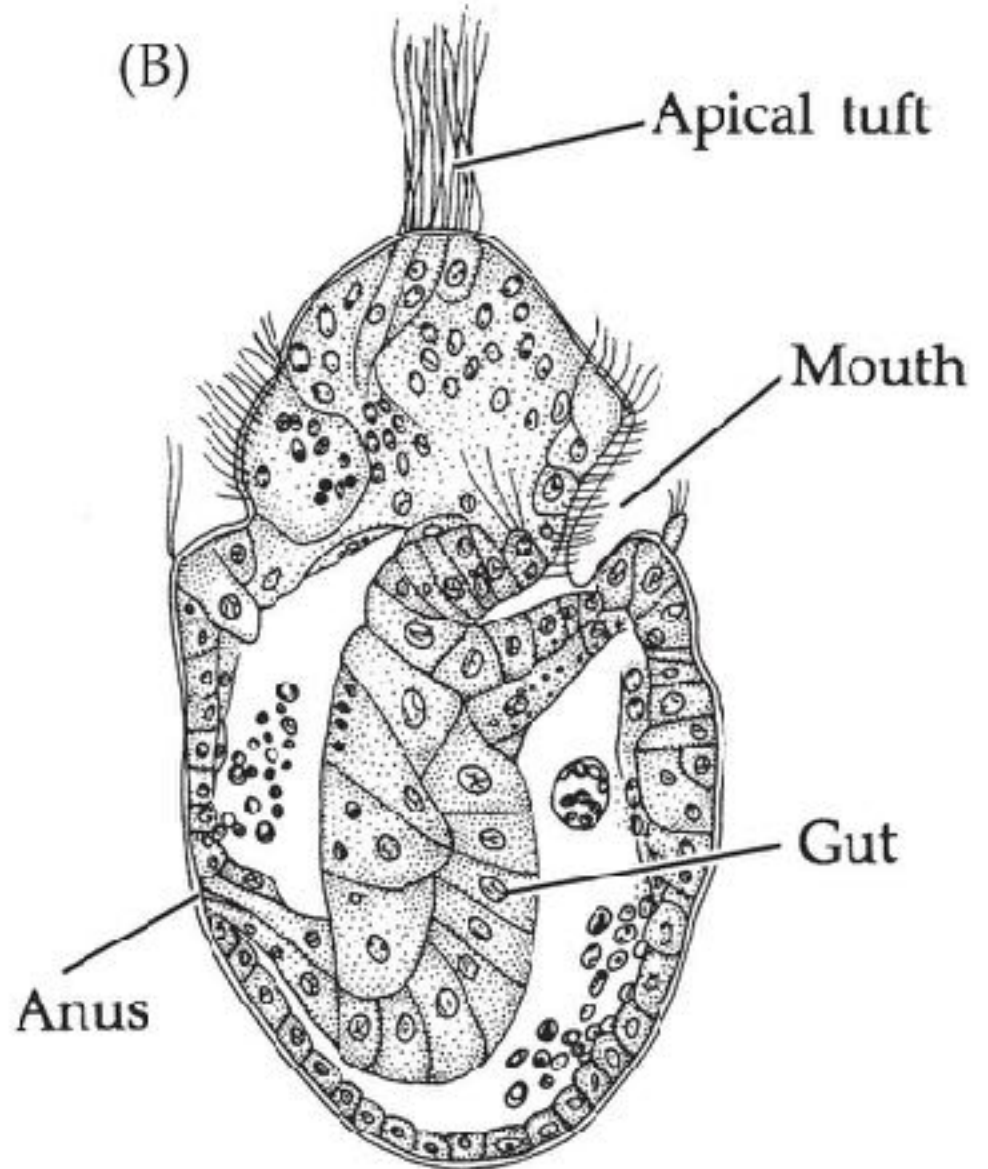
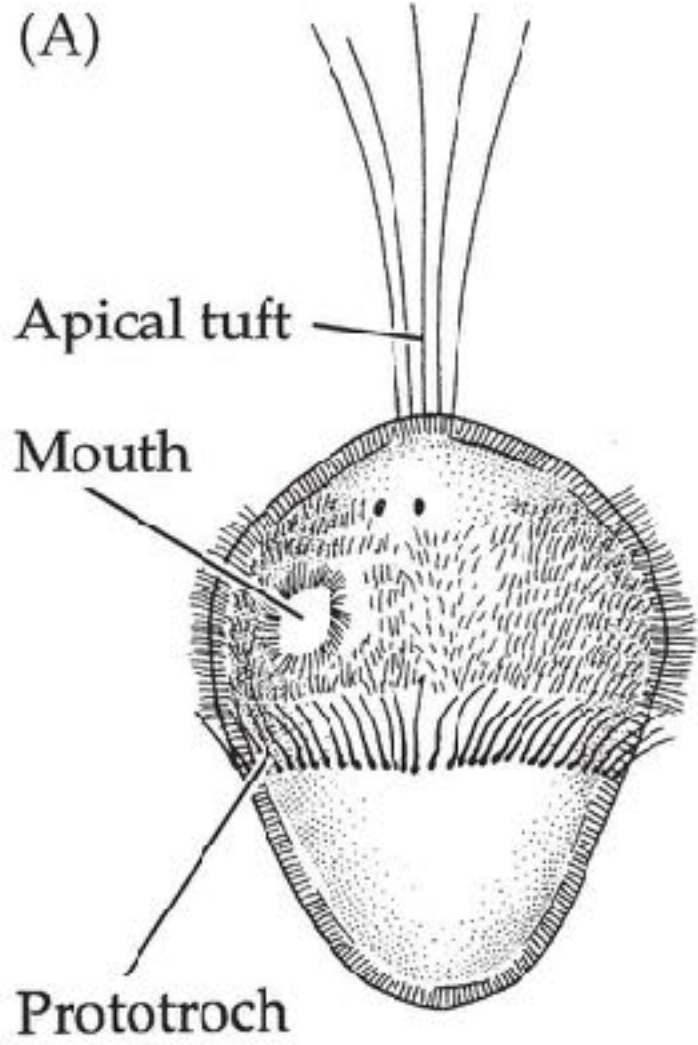
14.3 Sipunculan anatomy (Part 3)



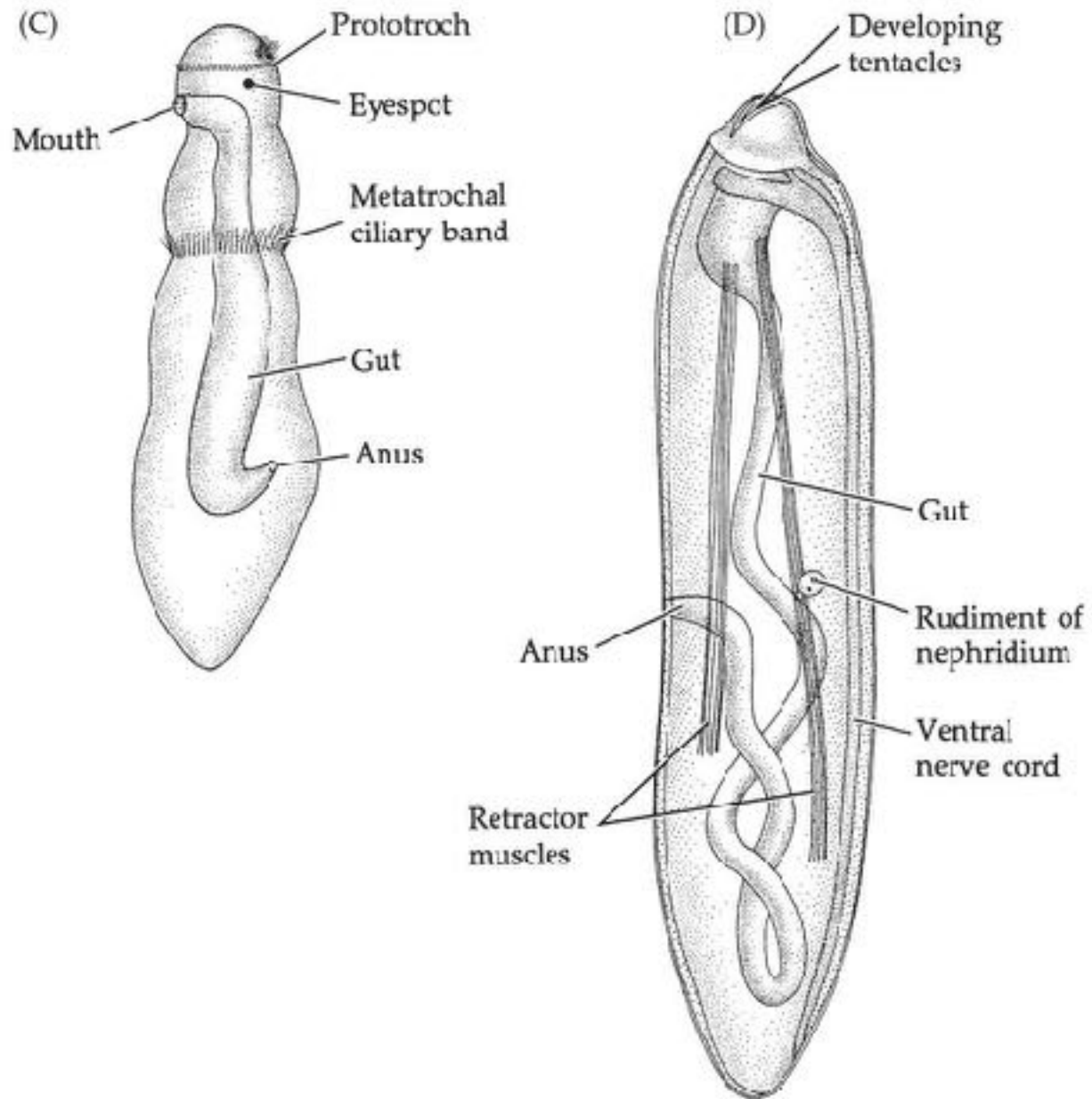
14.4 (A) Anterior portion of the central nervous system of *Golfingia*; (B) Anterior end of *Golfingia*



14.5 Sipunculan development (Part 1)



14.5 Sipunculan development (Part 2)

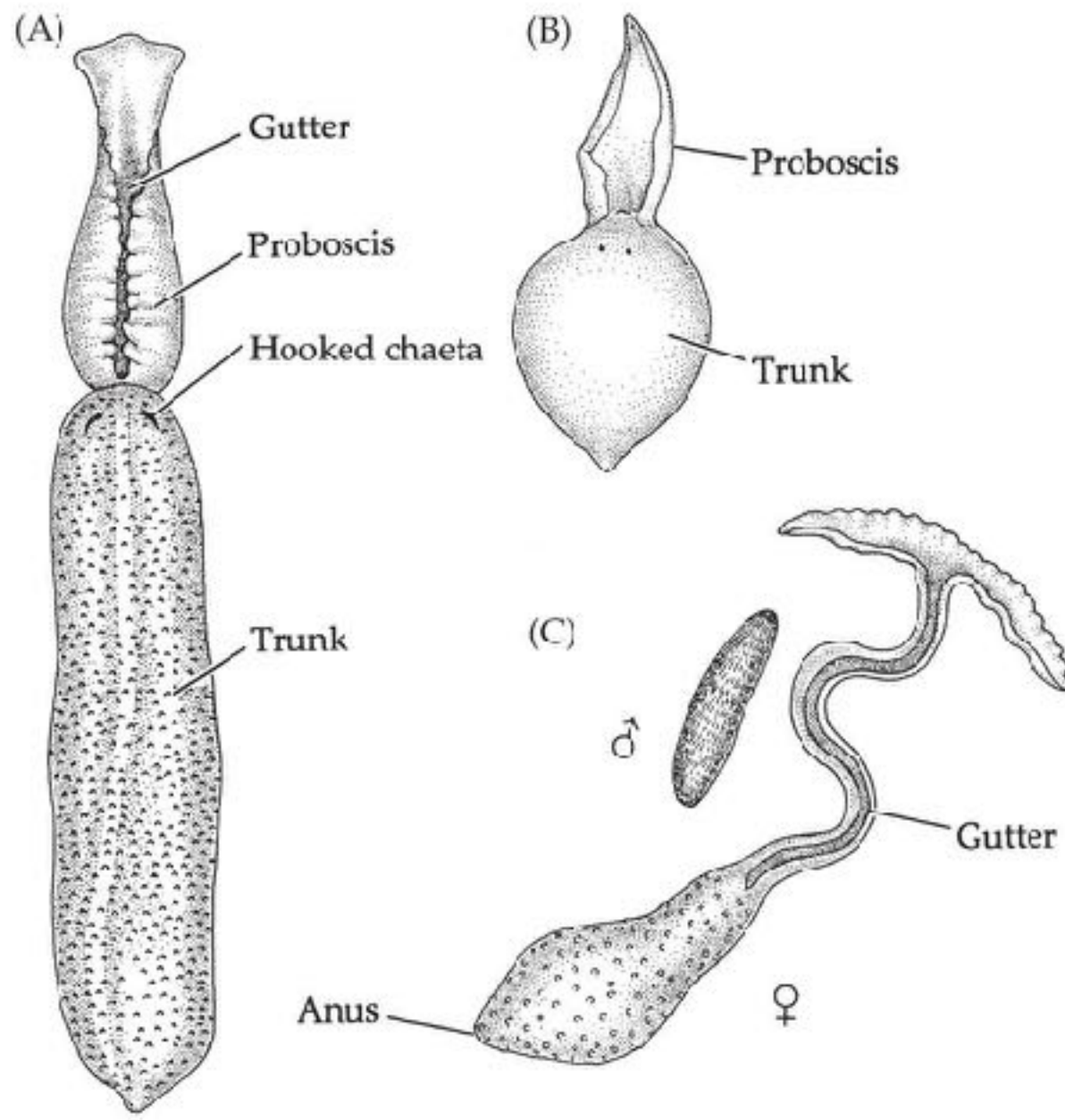


Echiura



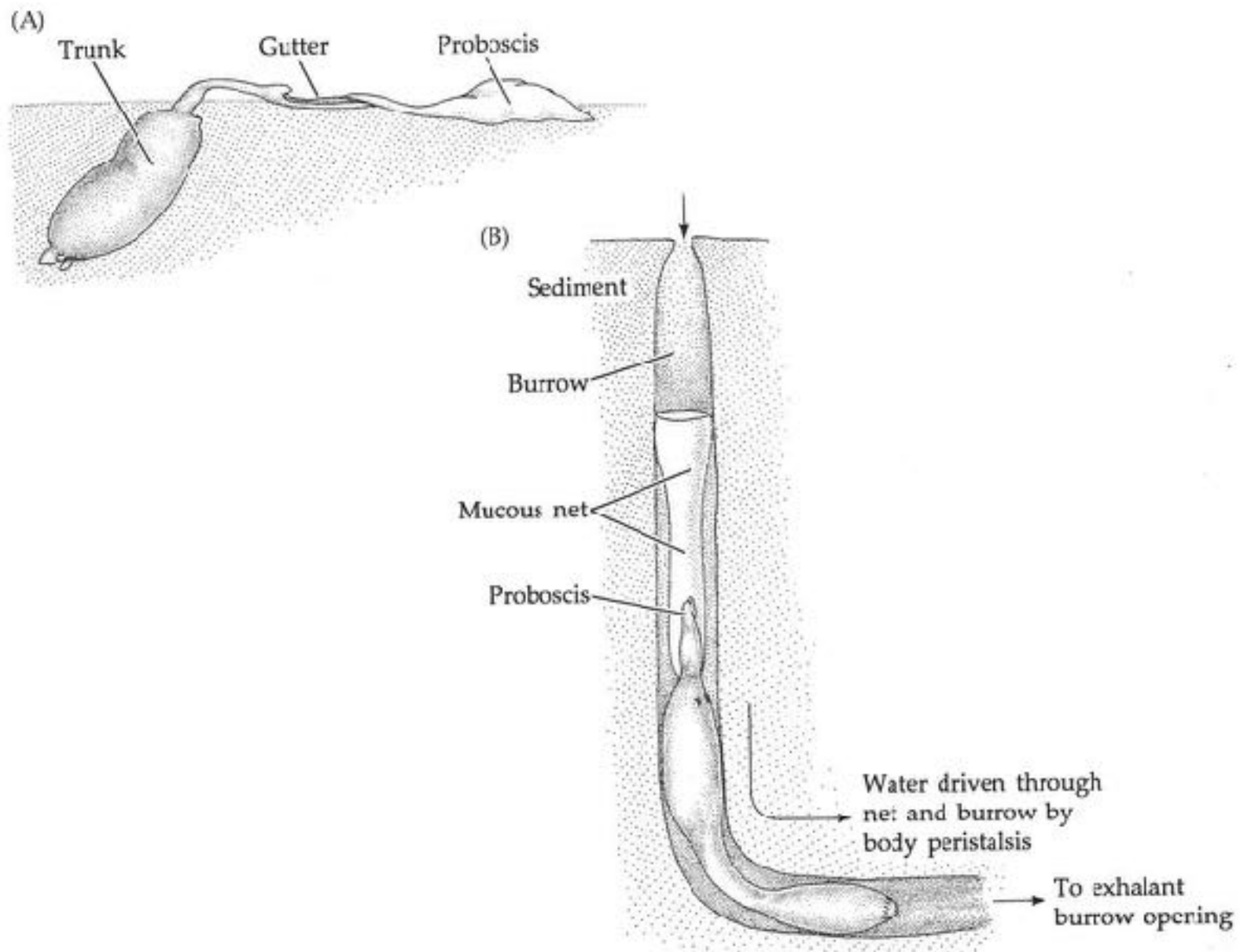


14.6 Representative echiurans

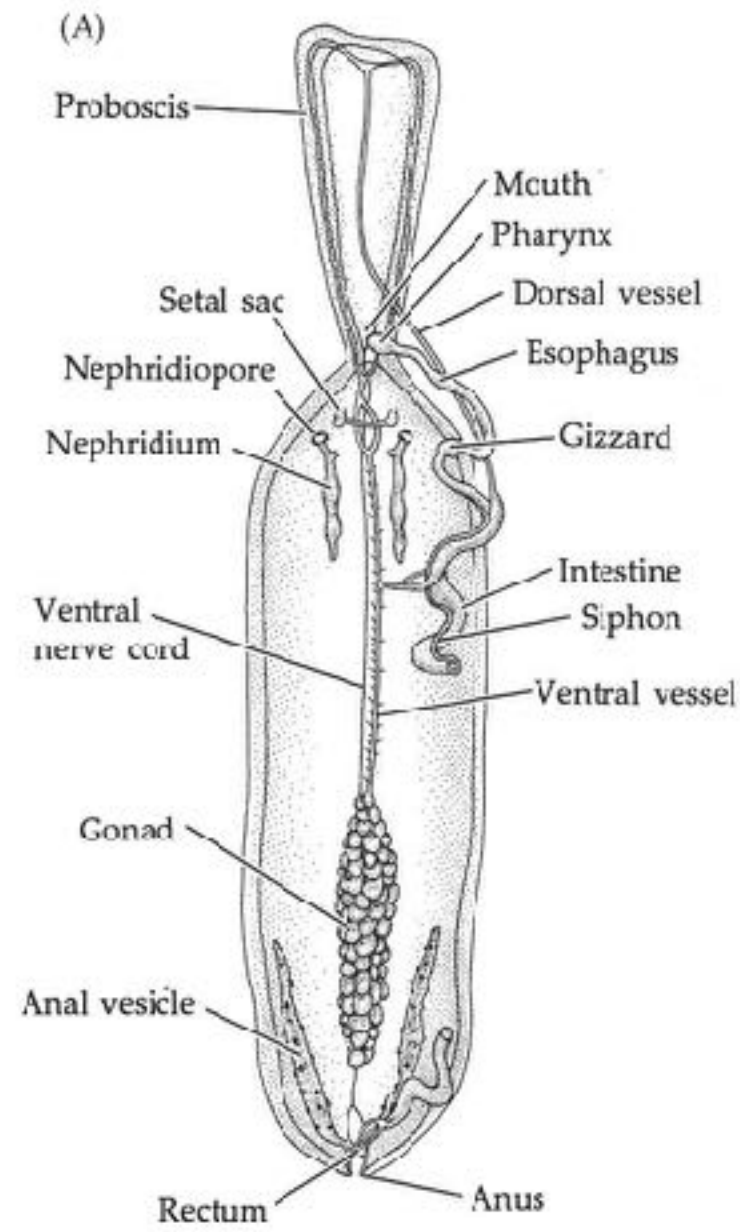




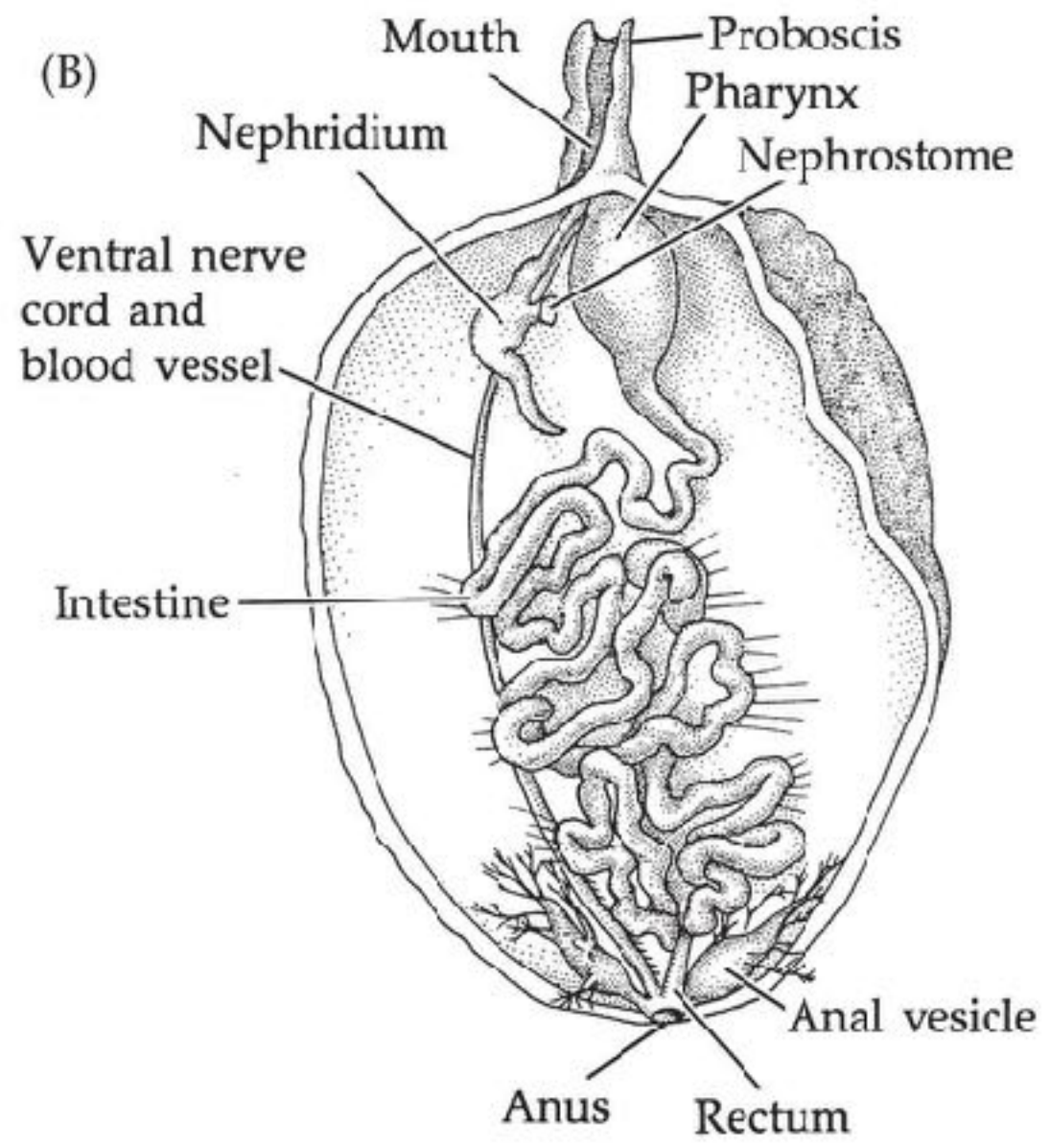
14.7 Feeding in echiurans



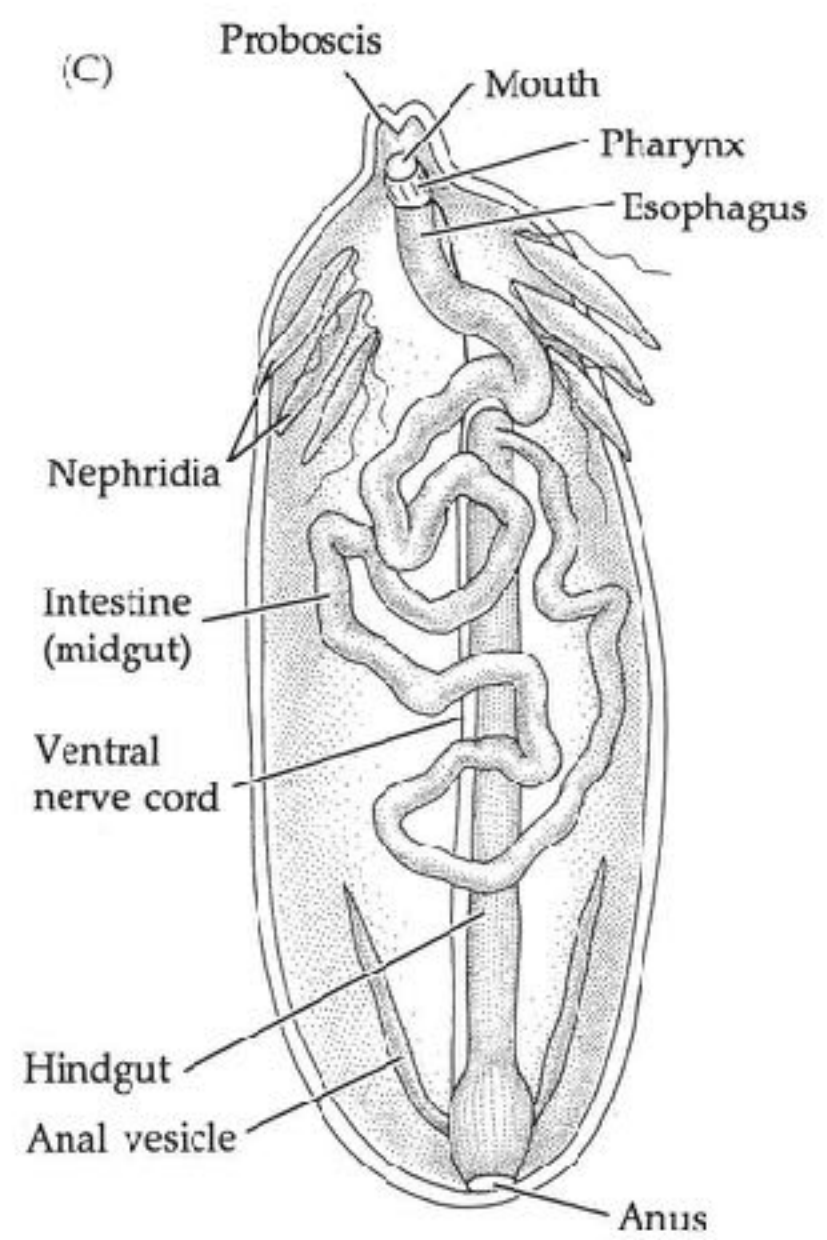
14.8 Internal anatomy of three echiurans (Part 1)



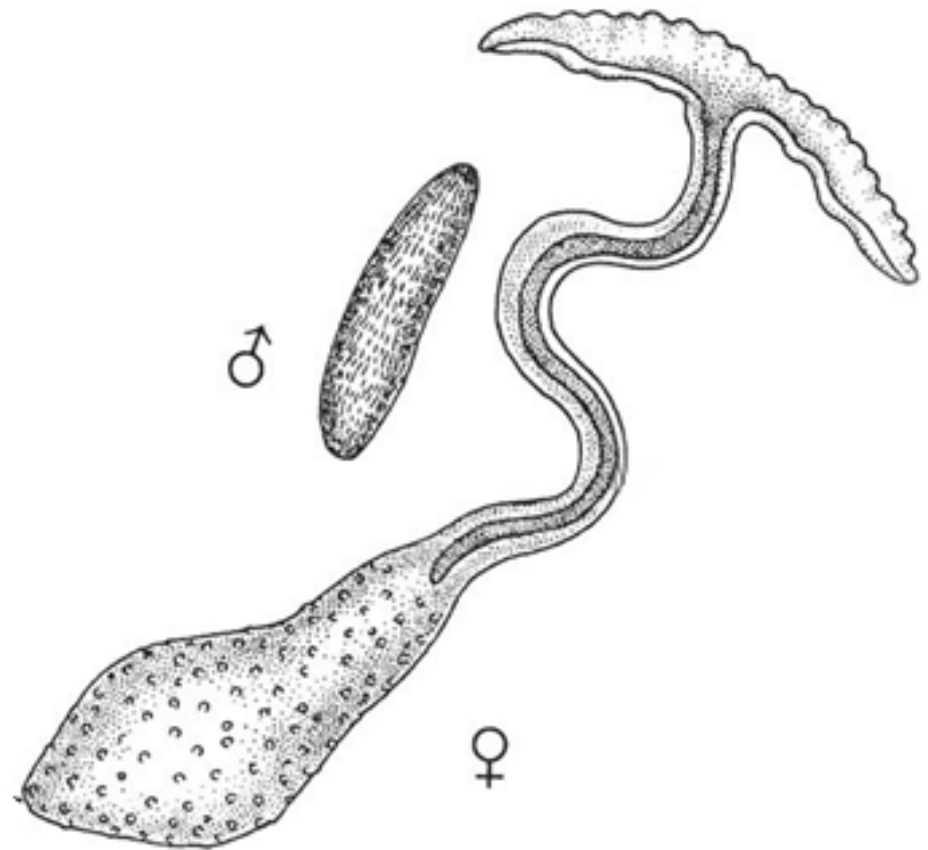
14.8 Internal anatomy of three echiurans (Part 2)

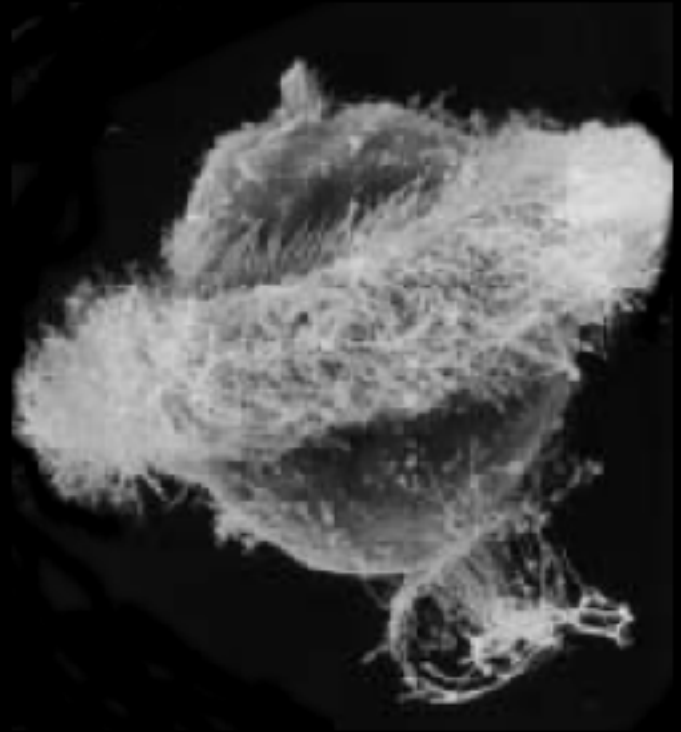


14.8 Internal anatomy of three echiurans (Part 3)



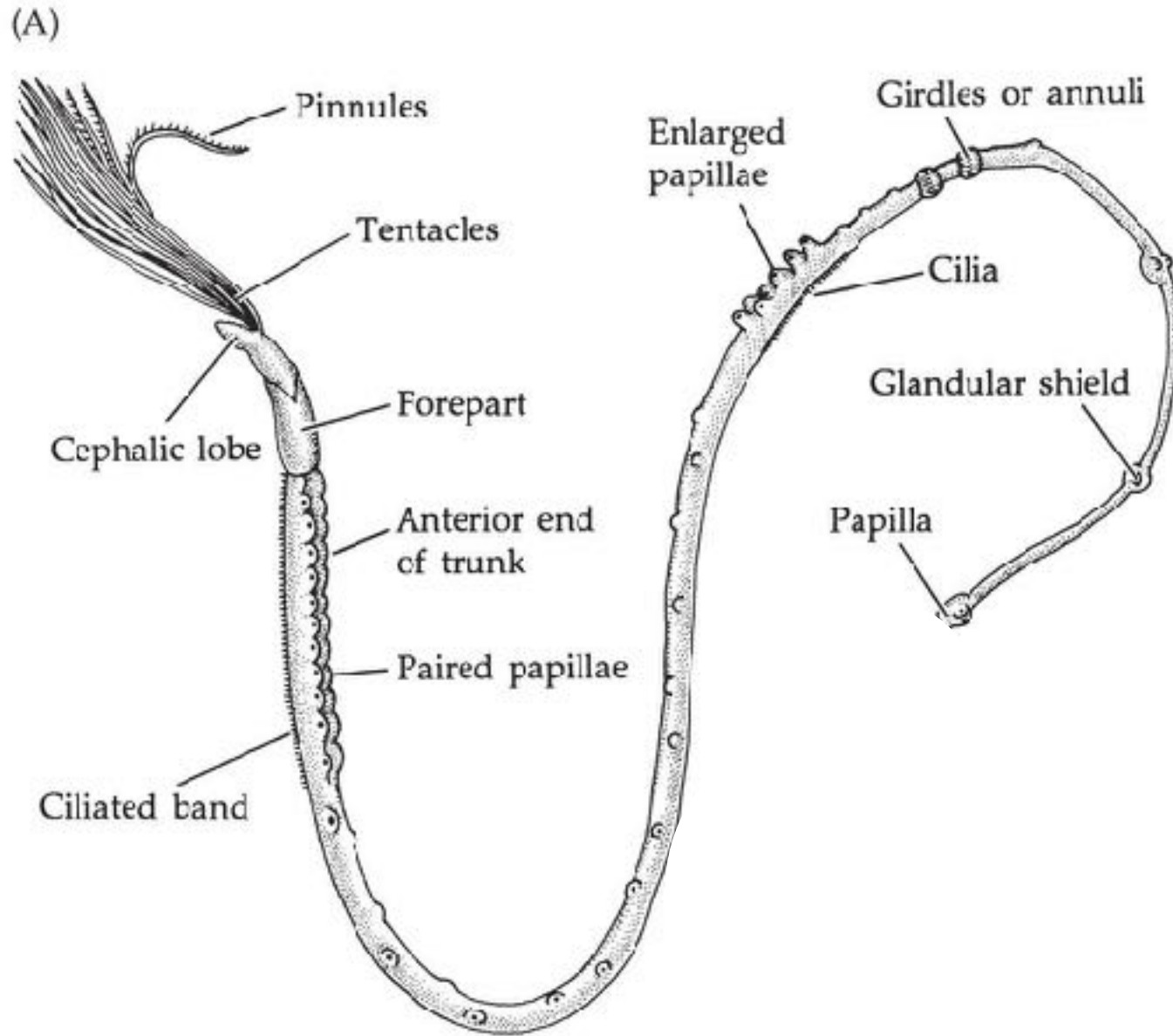


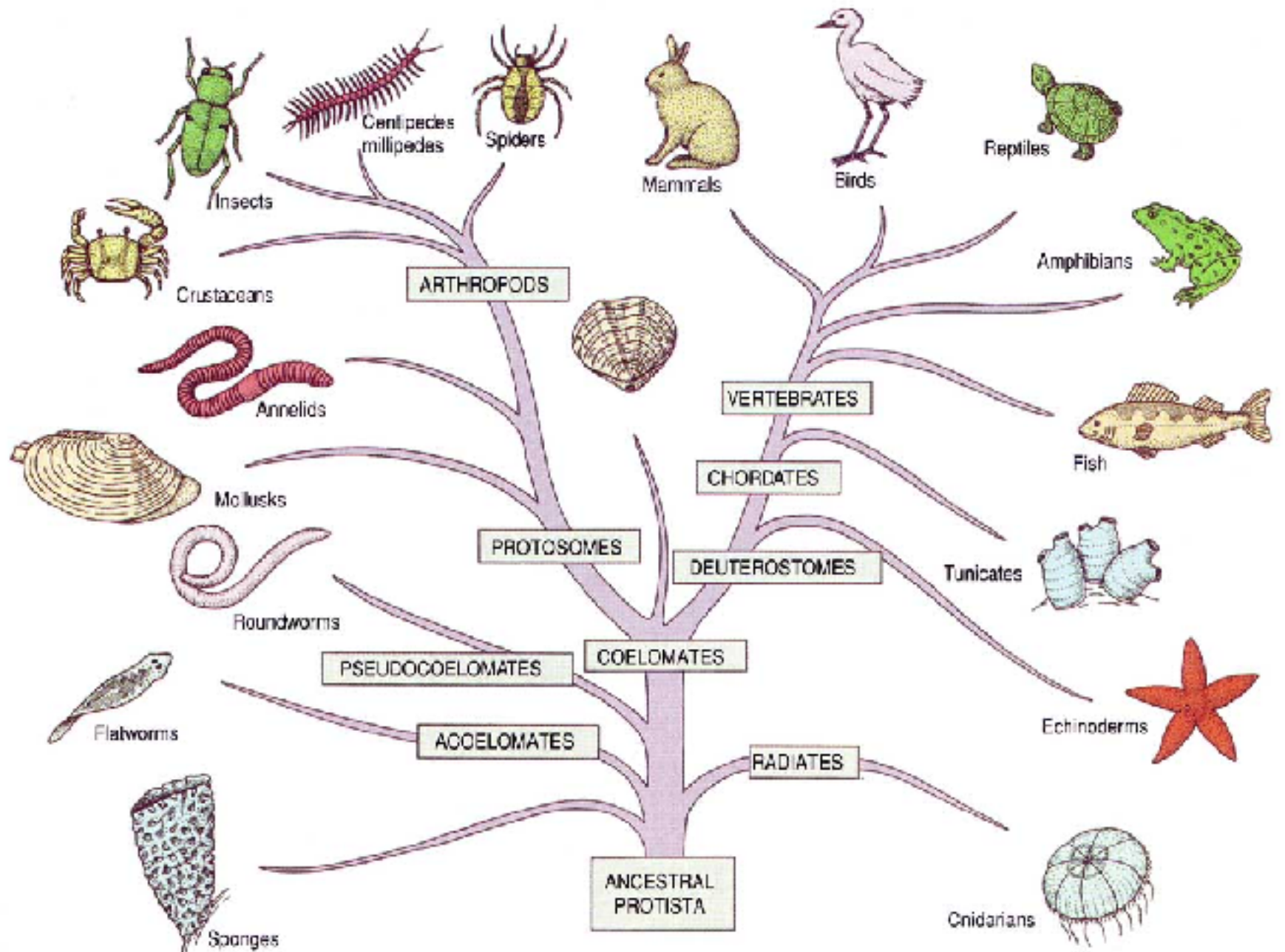


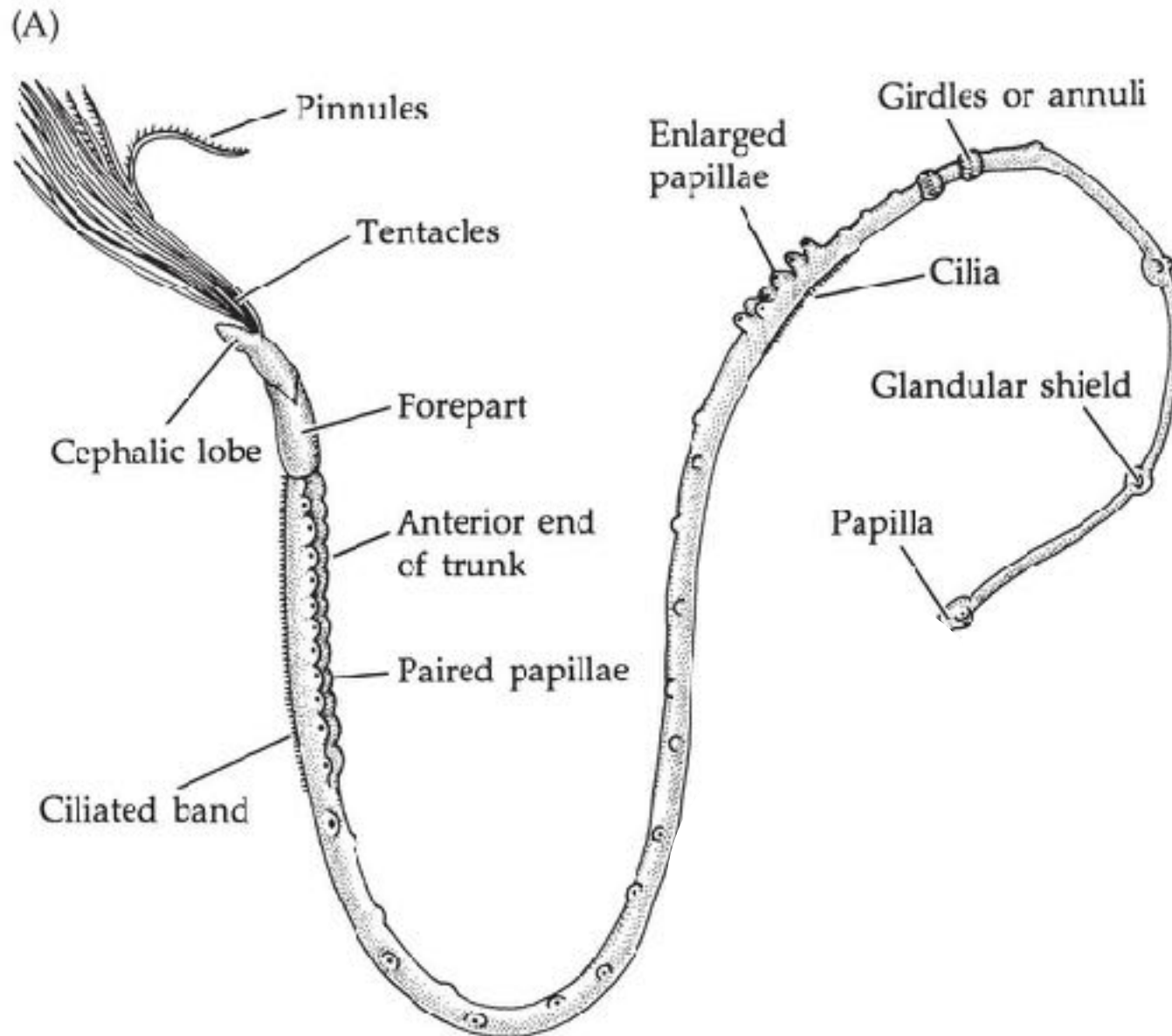


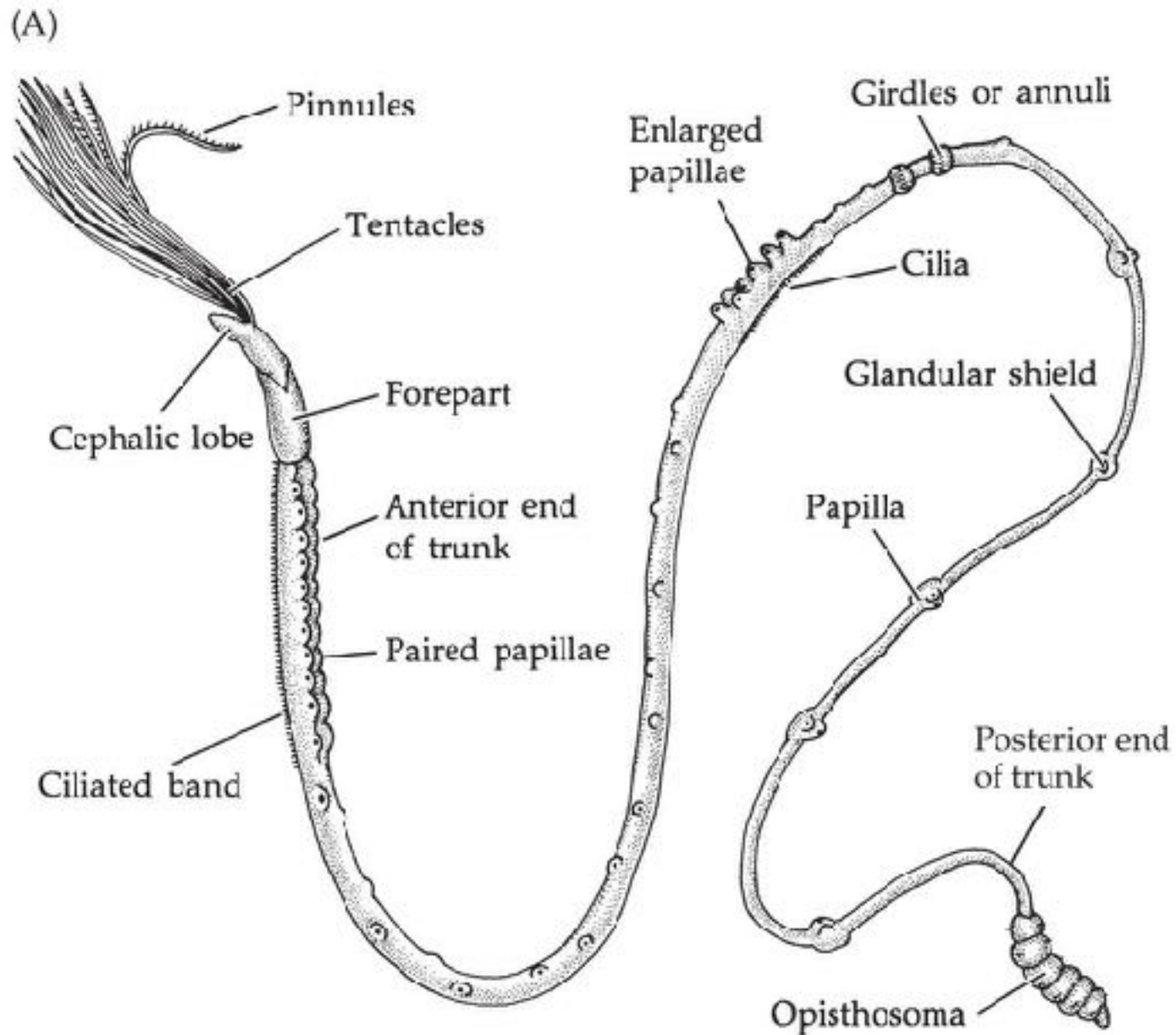
Pogonophora (Vestimentifera)

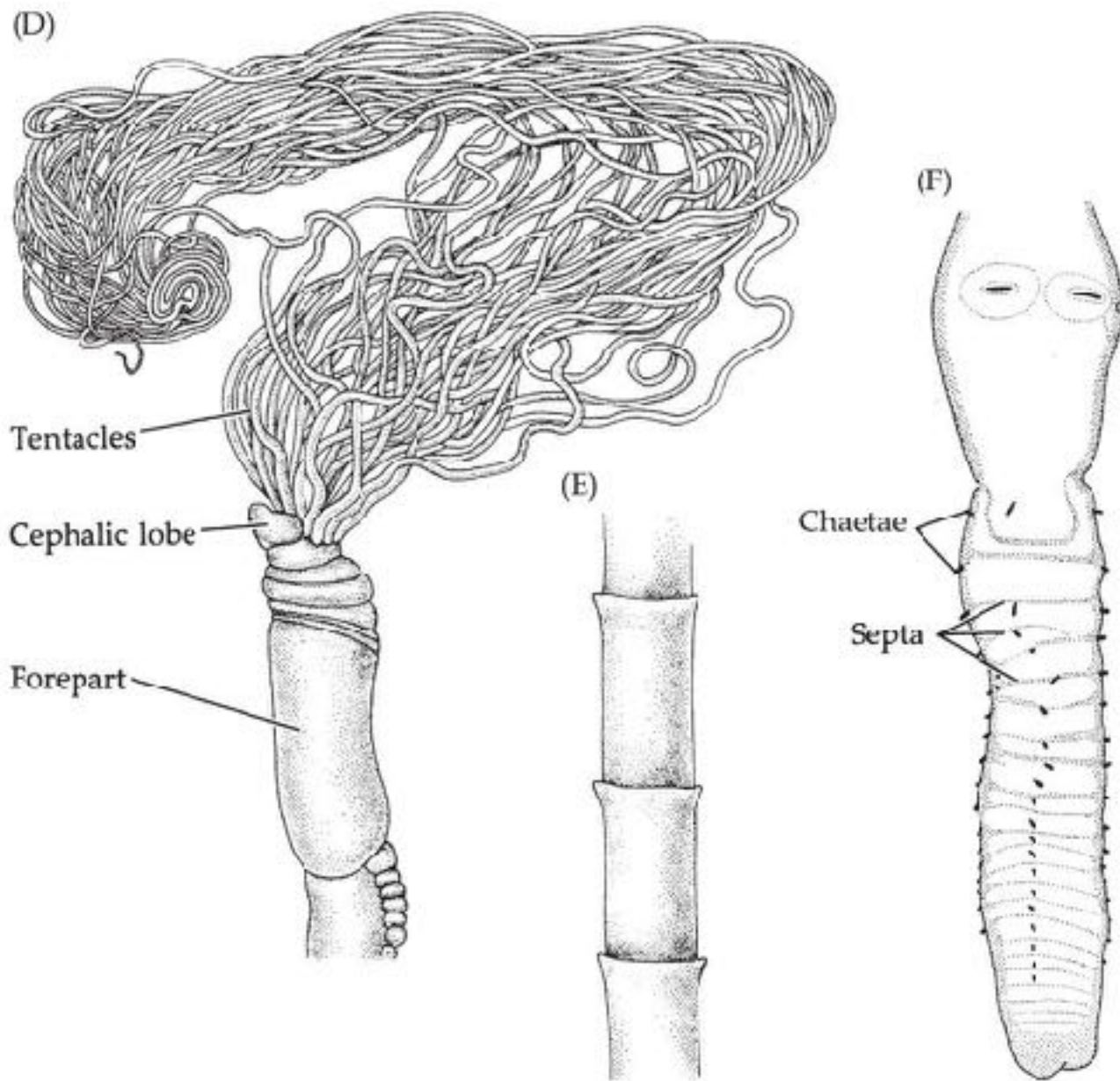


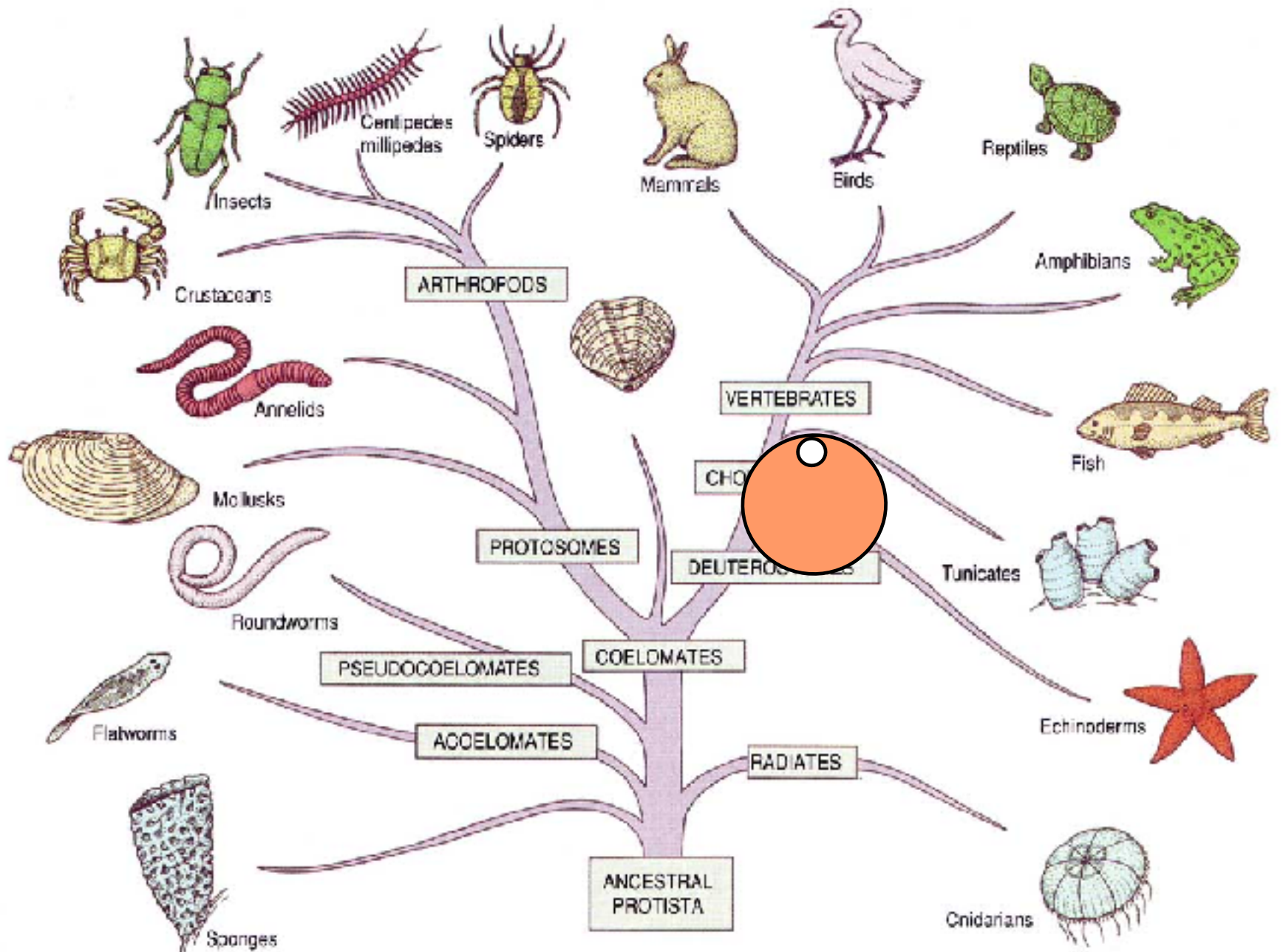


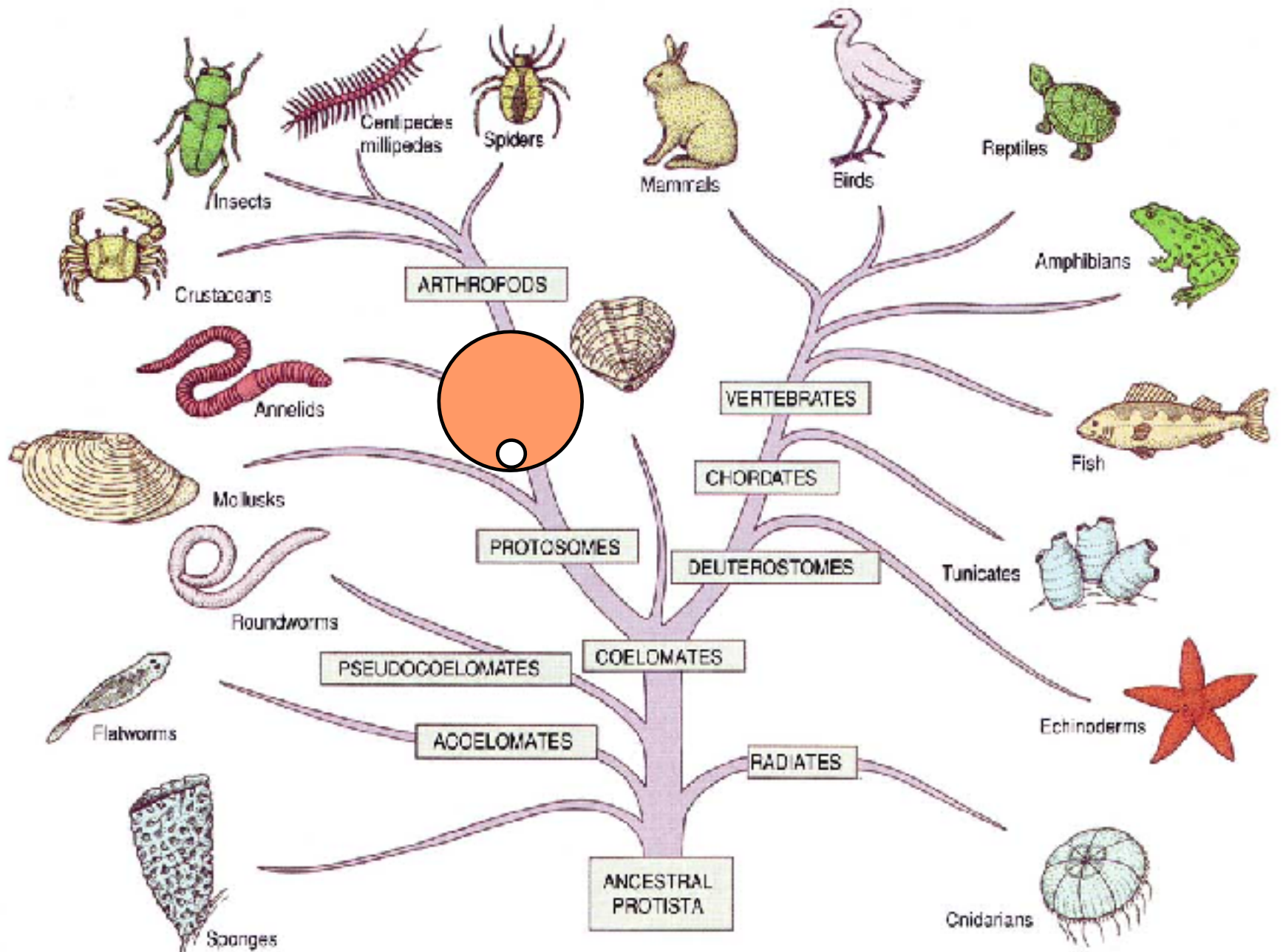




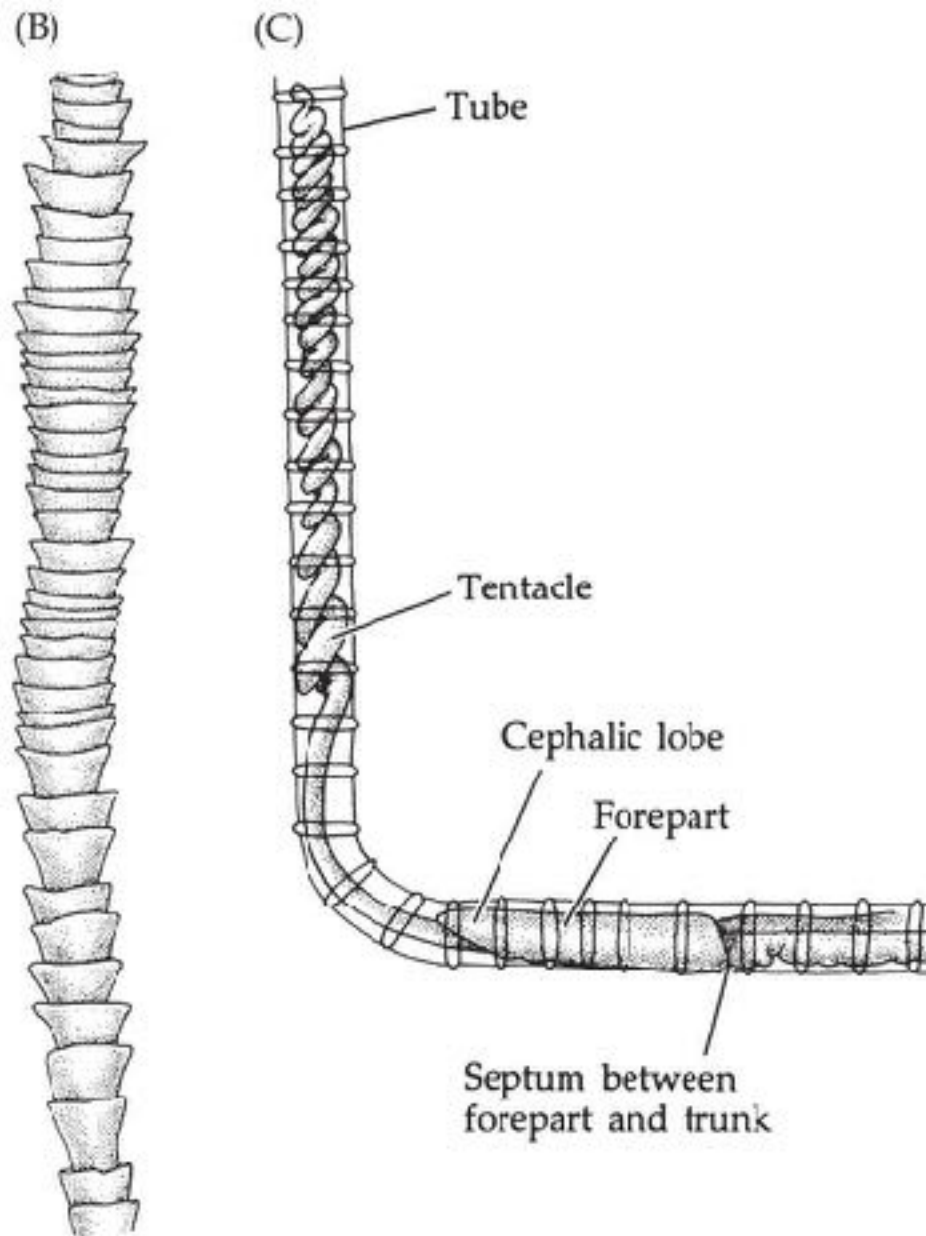




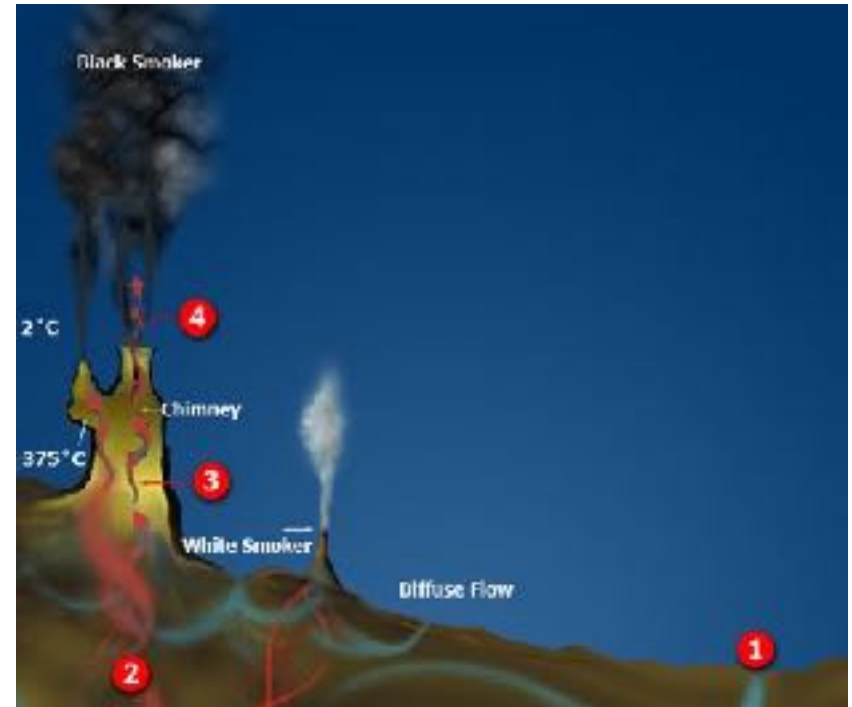
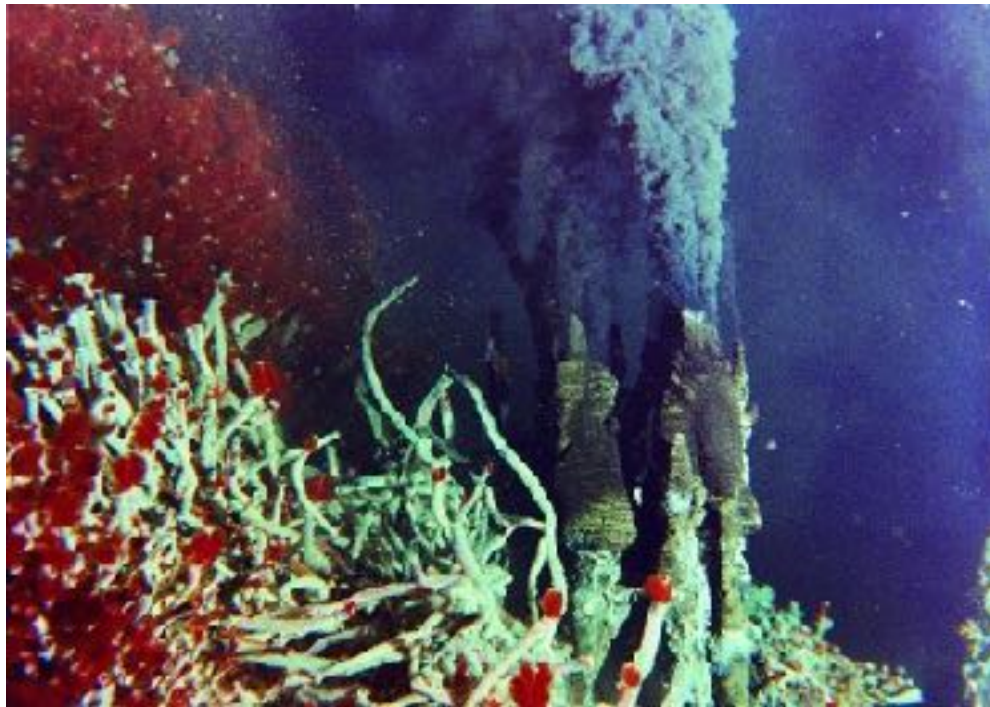




13.38 Beard worms (Siboglinidae) (Part 2)

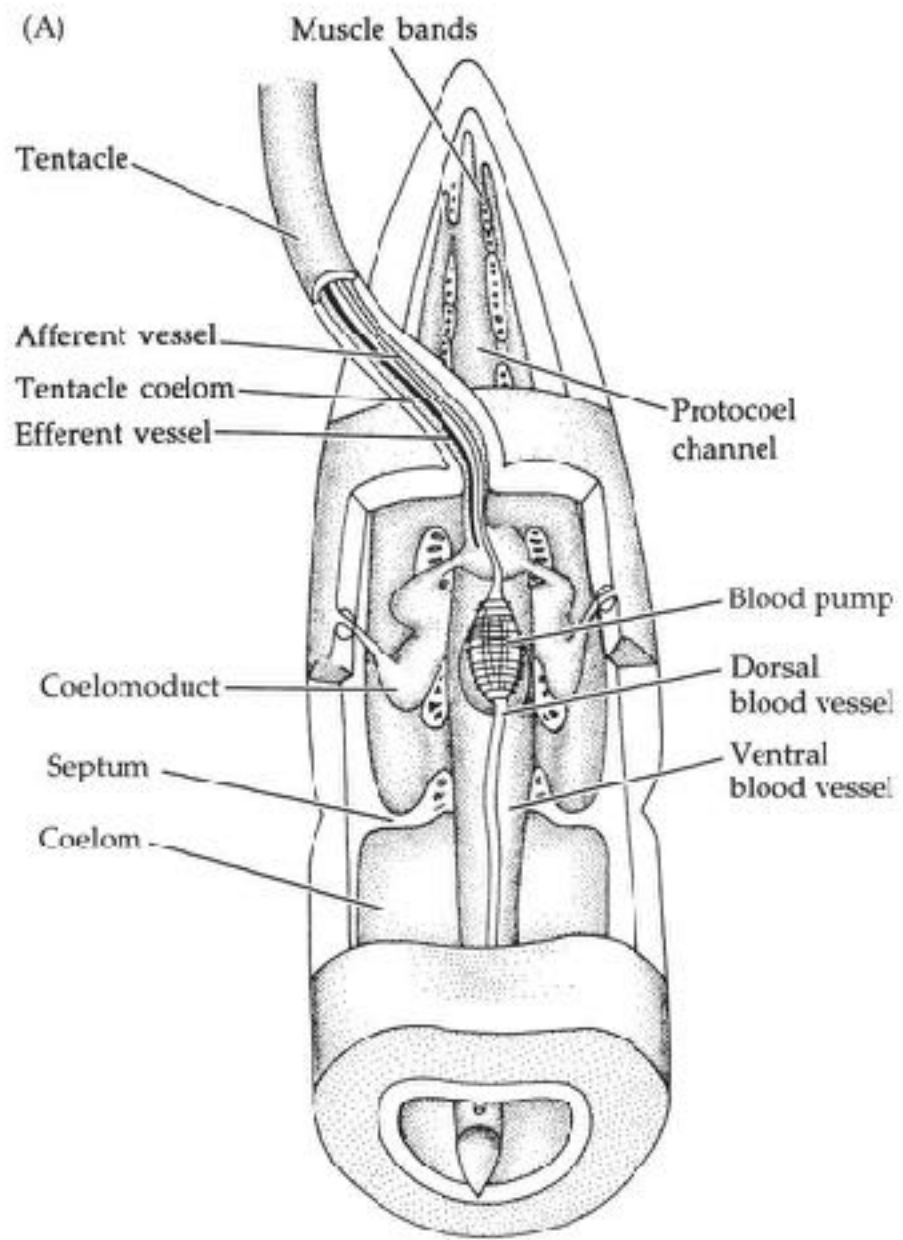


POGONOPHORA & VESTIMENTIFERA

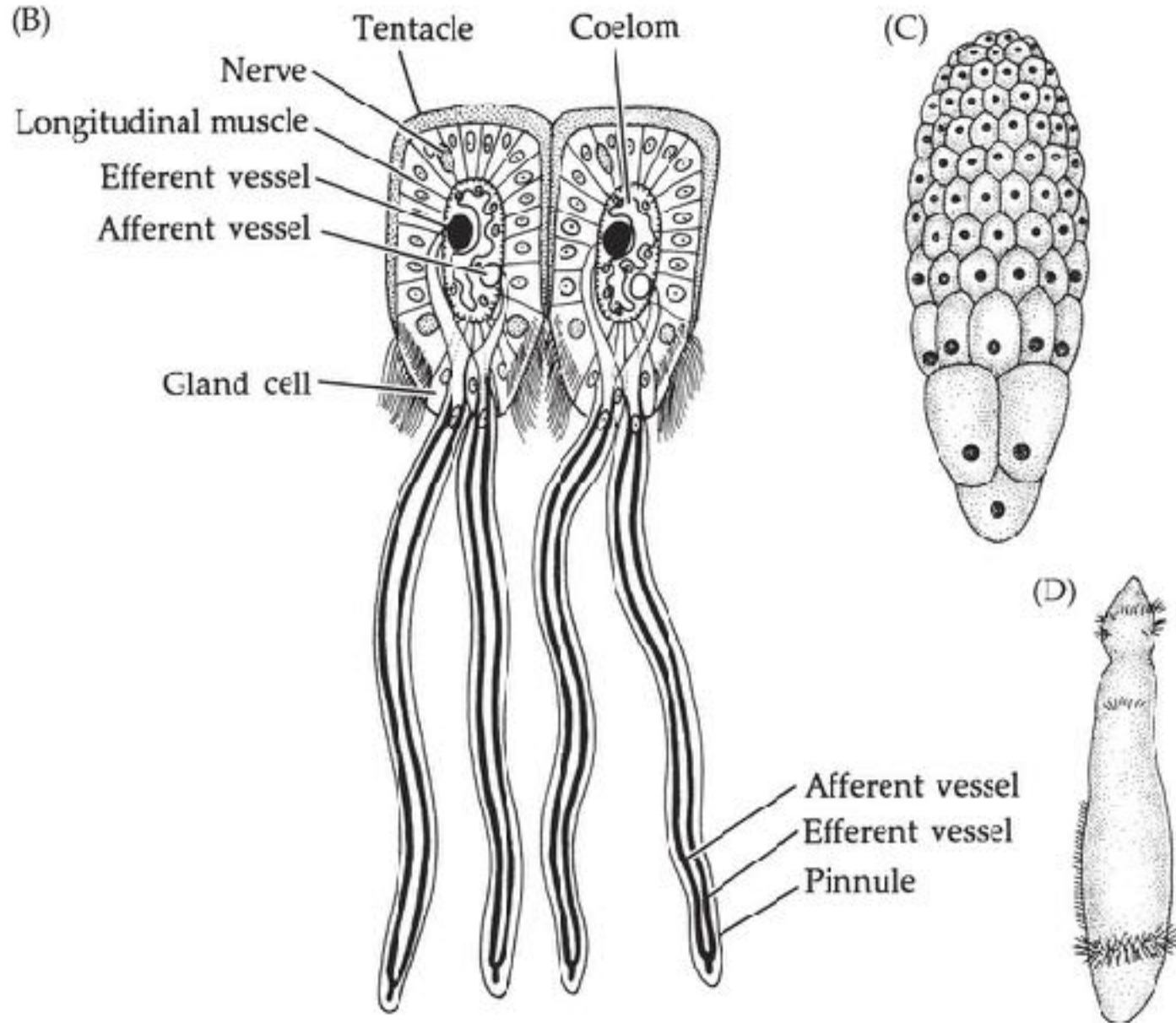




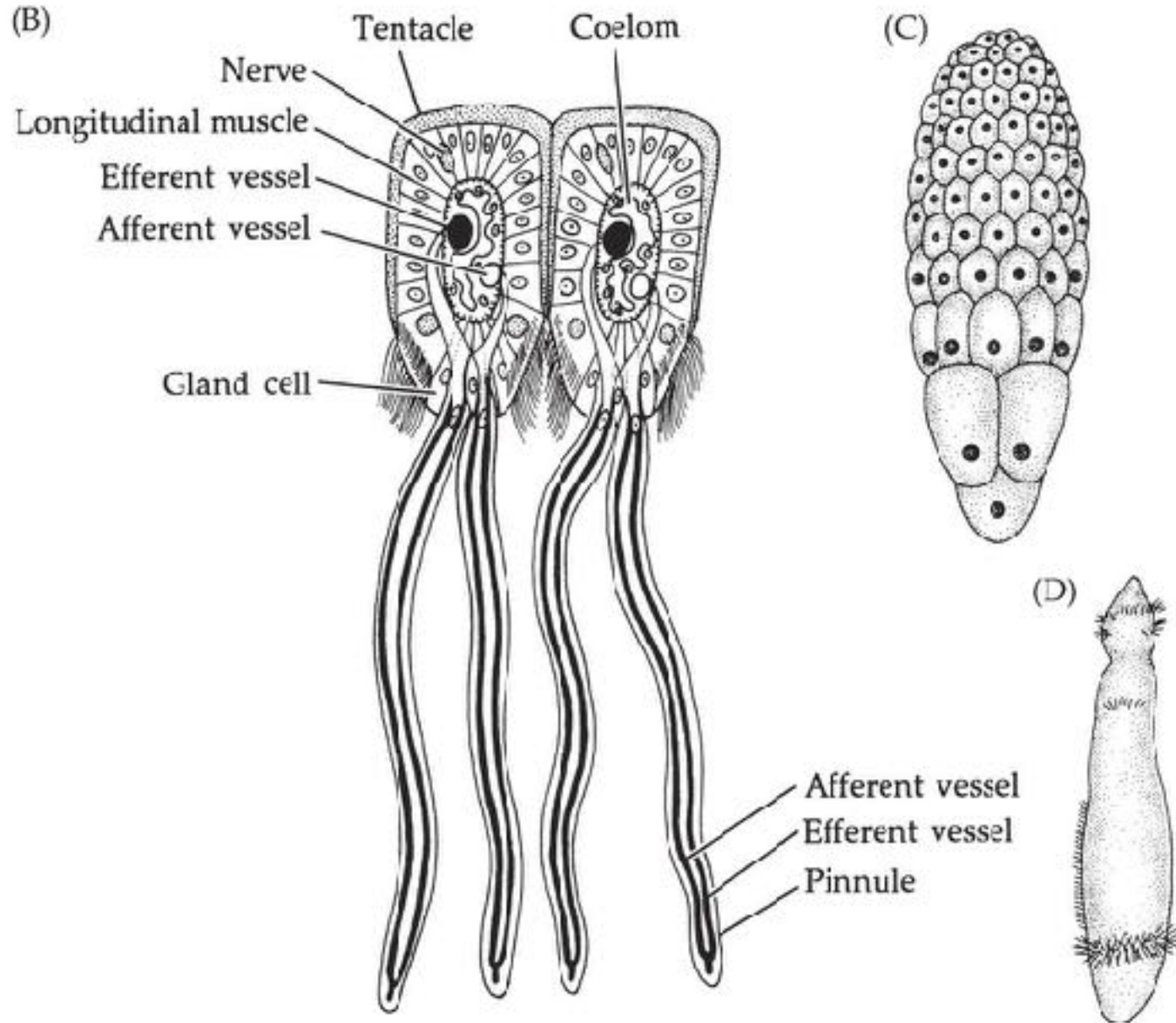
13.39 (A) The anterior end of *Siboglinum* (cutaway dorsal view)



13.39 (B) Two tentacles of *Lamellisabella*; (C) Late cleavage stage of *Siboglinum*; (D) Tripartite larval form of *Siboglinum*



13.39 (B) Two tentacles of *Lamellisabella*; (C) Late cleavage stage of *Siboglinum*; (D) Tripartite larval form of *Siboglinum*



Osedax: Bone-Eating Marine Worms with Dwarf Males

G. W. Rouse,^{1,2*} S. K. Goffredi,^{3*} R. C. Vrijenhoek^{3†}



